

CANCER FOR COLLEGE

DESTINED TO MAKE A DIFFERENCE

2016 Annual Report

Dedicated to Helping Cancer Survivors Realize Their Dream of a College Education

Mission:

Cancer for College provides hope and inspiration to cancer survivors through the granting of college scholarships and professional mentor support.

How Your Donations Help Survivors Dreams Come True:

Donations come in to support our program and are used to provide college scholarships to cancer survivors that have been impacted physically, emotionally and financially by the disease. In addition, we have added a component of mentoring scholarship recipients were we bring in active supporters of our program and pair them with scholarship recipients to share life experience and professional support to these scholars.



Table of Contents

Staff & Advisory Board	3
Letter from President/CEO	4
Letter from Executive Director	4
CFC Infographic	5
Scholarship Procedures	6
2016 Scholarship Recipients.....	7
Scholarship Descriptions.....	8
Event Recaps.....	10
Mentor Program	12
Our Stories	13
Financials.....	14
Donors & Supporters	15

OUR BOARD

Cancer for College is proud to have an amazing group of individuals from all walks of life that give their time to help the charity thrive and grow. We are honored that the following individuals have made our mission a priority in their busy lives. The Founders of the charity and the entire advisory committee serve in a volunteer capacity.



EXECUTIVE BOARD

Craig Pollard: President/CEO
Matt Kline: Vice President
Scott Sproule: Treasurer
Julie Kelly: Secretary
Will Ferrell, At-Large
Dan Hughes: At-Large
Sara Hyzer: At-Large

STAFF

Greg Flores, Executive Director
Abigail Houck, Pacific Northwest Director
Mitch Friesen, Community Growth & Development

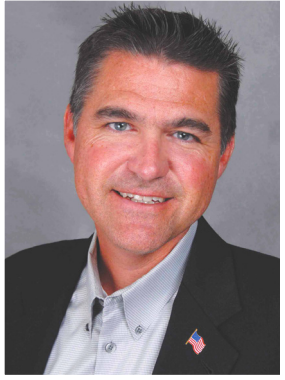
ADVISORY BOARD

Will Ferrell: Celebrity Spokesman
Cole Brodman: Retired CMO T-Mobile
Kelly DeVita: Gear for Sports
Hardy Ehlers: Attorney, O'Melveny & Myers LLP
Dr. Stephen Forman: Director of Hematology and Oncology
City of Hope Medical Center
Dan Hughes: CEO Coast Environmental
Sara Hyzer, Pricewaterhouse Coopers LLC
Ashley Kline: Kendis & Co, Friends of Children's Hospital LA
Matt Kline: Partner, O'Melveny & Myers LLP
Julie Kelly: Co-Founder Flexource
Martin Lesak: Partner, United Talent Agency
Andrew McMahan, Dear Jack Foundation
Robert O'Carroll, O'Carroll Investment Management
Stacy Pollard, Co-Founder
Scott Ripperton: Senior VP Wells Fargo
Scott Sproule: SPX
Larry Simon: CEO Life Firms
Johnese Spisso: CEO, UCLA Hospital System

*“Outstanding leaders go out of their way to boost the self esteem of their personnel.
If people believe in themselves, it is amazing what they can accomplish.”*

Sam Walton

Letter From President/CEO



It was over 23 years ago that I determined that I wanted to help cancer survivors realize their dream of a college education. I rallied 24 of my closest family members and friends. We staged one tiny golf tournament and awarded a single \$500 scholarship later and I knew we were doing the right thing.

Cancer can devastate a family. The destruction is not only physical and emotional. It can be financial as well. Families use every last resource to fight the disease. Life savings, retirement plans and college funds are drained by medications, operations and procedures often not covered by insurance. What parent

wouldn't exhaust every means possible to keep their child alive?

Over the years, we've been fortunate to be able to share the message of Cancer for College around the country. We've granted over \$2.3 million in scholarships to more than a thousand survivors from all 50 states. This year alone, we granted 83 scholarships totaling \$368K. We've come a long way from that first tournament, but we have so much farther to go. Even with our growth, we are only able to help a fraction of survivors who seek our assistance.

None of this would be possible without the support and dedication of our donors. Without you, we would not have the opportunity to make such a lasting impact on the lives of these amazing cancer survivors.

Our heartfelt thanks goes out to everyone who makes what we do possible. We are humbled and honored that you choose to support our mission.

Craig Pollard
President/CEO
Founder

*“Education is the Most Powerful Weapon
You Can Use to Change the World.”
Nelson Mandela*

Letter From Executive Director



I'm not making any kind of revolutionary statement when I say that cancer is a frightening adversary. As a parent, you hate when your children are sick. All you want is for the fever to break or the symptoms to go away. It is incomprehensible to imagine that illness stretching on for months and years.

It is staggering to think of using every last financial resource at your disposal to win the battle against the disease only to be left with nothing in reserve when your child is ready to reenter the real world and once again begin the pursuit of their dreams.

Cancer for College is so fortunate to be able to be in a position to help these survivors and their families that have been devastated physically, emotionally and financially by this disease. The donations that come in through our events and fundraising efforts go directly back to the people that have endured so much. They truly comprehend what it means to be given another chance at life and they make the most of it.

The determination of our scholars is inspiring.

We are so proud to be introducing the next generation of Cancer for College support with our new mentor program. We are pairing some of our most ardent and loyal supporters of the charity with a scholarship recipient pursuing a career in a similar field or discipline. Imagine a nurse mentoring a future nurse or a lawyer providing guidance to a future lawyer. It fulfills a dream to create a true community of cancer survivors.

We hope you see fit to join our family.

Greg Flores
Executive Director
Cancer for College

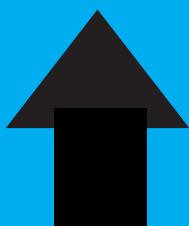
*“Learn from Yesterday, Live for Today
and Hope for Tomorrow.”
Albert Einstein*

Cancer for College Received over 1,100 Applications for Support in 2016

DID YOU KNOW...

There are currently more than 600,000 Young Cancer Survivors in the United States (age 18-39)
- USA Today

WHAT IS THE IMPACT OF A \$5K SCHOLARSHIP?



Only 46% of students from low income families are able to attend college. A Cancer for College scholarship increases the chances of graduation by up to 30%.

- University of Southern California
- The Economics of Education

CANCER TREATMENT IS EXPENSIVE

Cancer treatment costs can range into the 10's of thousands of dollars. Would any parent deny treatment that could save the life of their child?

\$10K

- Johns Hopkins Health Alert

- Our Scholarship Recipients are
- Destined
- to Make a
- Difference



BENEFITS OF A COLLEGE DEGREE

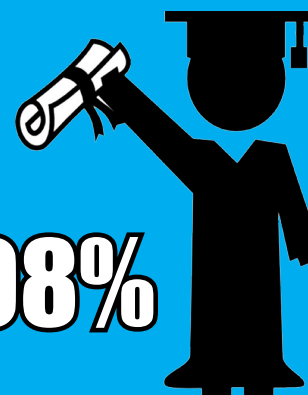
70% of college graduates had access to employer-provided health insurance compared to 50% of high school graduates in 2008. For cancer survivors, access to quality health care is vital as treatment of the disease can often have long term effects that require ongoing medical care.

- The 7 Benefits of Earning a College Degree



Since inception, Cancer for College has granted over \$2.3 million to more than 1,100 cancer survivors from around the country.

98%



The national college graduation rate is 60%. In 2016, a Cancer for College survey of scholarship recipients showed that 98% of our scholars graduated from college.

- National Center for Education Statistics



Policy

Cancer for College grants scholarships to cancer survivors who are enrolled in an accredited college, university or trade school.



Scholarship Procedure

Since 1993, Cancer for College (a registered 501 (c) 3 charitable foundation) has provided hope and inspiration to cancer survivors in the form of college scholarships. Scholarship application period runs from November 1 through January 31. Scholarships are awarded in July. Awards outside the regular award period are considered on a case-by-case basis.

Applicants are not discriminated against based on sex, race or religious belief. California applicants and applicants attending Southern California colleges will receive first consideration for perpetual scholarships. All remaining applicants will be eligible for other one-time awards. Awards range from \$1000 - \$5,000. Scholarship recipients must maintain full-time enrollment at his/her stated university. Failure to maintain full-time enrollment or transfer from a 4-year university to a community college may result in loss of scholarship funds. Scholarship recipients experiencing health-related issues that force them to leave school may request a one-time extension of their scholarship, not to exceed one school year. Recipients exceeding this time will forgo their scholarship, but may reapply when ready to return to school and will receive first consideration.

Below you will find a list of documents that will be needed to complete the 2017 Cancer for College scholarship application.

ITEMS YOU WILL NEED TO KNOW OR HAVE AVAILABLE TO COMPLETE THE APPLICATION

1. The first two pages of the 2015 tax return for:

* If you are under 25 and claiming to be independent, you will need to provide your parents' returns to show that they do not claim you.

- Your parents' 2015 tax return if they file jointly
- Your Father's and Mother's 2015 individual return if they file separately
- Your personal 2015 tax return

If you do not file a tax return, you must upload proof of any income such as SSI, W-2, Snap Benefits or other written documentation

2. Letter of Good Standing from the University you are attending

3. Two-years of Academic Transcripts (High School, College or Combination depending on your year in school)

* These can be requested via email you submit through the application or uploaded if you already have copies.

4. Confirmation of Diagnosis Letter (Must be completed on medical letterhead by your oncologist, primary care physician or nurse)

* You can upload a letter you currently have, or request a letter from your doctor directly through the application system.

5. Two Letters of Recommendation from two people outside your immediate family.

* You will send an email through our system to your letter writers and they will write their letter directly into the application program.

6. Total Cost of Attendance (This is a number published by your school or university, This includes tuition, room & board, books, etc.)

*This is the annual cost to attend. Not the cost for 4 years of attendance.

SCHOLARSHIP COMMITTEE

The scholarship committee is comprised of staff, volunteers, past scholarship recipients and the founders of the charity.

All applications are graded on a rubric.

Points are allocated based on financial need, letters of recommendation and GPA.

The scholarship committee gathers to read the top 100+ personal statements in a group setting over several weeks. Personal statements are graded in averaging the scores of the committee and deducting the high and low score. A minimum of 6 committee members must be present in order to score

Meet Our 2016 Recipients

Perpetual Scholarship Recipient

The Cancer for College Perpetual Scholarship is granted to an incoming freshman. The scholarship will run for four years provided the scholar maintains full-time status in school.



Nick Main

CALIMESA, CA

ATTENDING:

CAL BAPTIST UNIVERSITY

STUDYING: FILM AND ENGINEERING

SURVIVOR OF: OSTEOSARCOMA

Meet our friend, and 2016 perpetual scholar, Nick Main. Diagnosed when he was 13 with an aggressive form of Osteosarcoma, Nick saw cancer at its worst. The cancer quickly spread from his right arm to his lungs, resulting in multiple surgeries and the need to amputate his entire arm and partial shoulder. Cancer took part of him, but Nick vowed to never let cancer take the most important things in life: his smile, laugh, or the precious moments with his family. And as a freshman film major at CBU, Nick also refused to let cancer take his dream of becoming a Hollywood movie director.

ONE-TIME SCHOLARSHIPS

Jake Barrios

Louisiana State University

Lauren Bendesk

Washington University In St. Louis

Samantha Bienkowski

La Salle University

Dalton Bouchles

University Of Southern Maine

Melissa Haltom

University Of Texas - Arlington

Kathleen Dooley

University Of Notre Dame

Jose Guevara

Cal State University, Los Angeles

Julia Gutierrez

New York University

Jaileen Gutierrez

UC Irvine

Chelsea Haynes

Warren Alper Medical School

Landry Hodges

University Of Mississippi

Vivian Huang

Cal State University, Long Beach

Kylie Johnson

Brigham Young University

University of Hawaii

Morgan King

Trinity University

Paul Kirk

University Of Massachusetts

Dominique Laster

University Of Arkansas At Little Rock

Stacy Leung

Philadelphia University

Pacific Northwest Scholars

Kate Baca

University Of Puget Sound

Mitchell Carbon

Whitworth University

Sara Florig

Portland State University

Robert Lisac

Central Florida School Of Medicine

Nicole Meade

Mt. Hood College

Sara Meza

Reed College

Alex Whittier

Brigham Young University

Carolinas Scholars

Jackie Balliot

University of North Carolina, Chapel Hill

Jacob Barringer

University of North Carolina, Charlotte

Brendi Bluit

Campbell University

Charlotte Malkin

Eastern Michigan University

Madeline Manganello

Northeastern University

Holly Martin

Temple University

Laura Merwin

John Brown University

Zachary Mills

Tarleton State University

Khana Nguyen

Austin College

Trevor Norby

San Diego State University

Emily Ott

Millersville University

Lindsey Panozzo

University Of Illinois At Champaign

Christian Pappas

University Of Arizona

Ashley Pooker

University Of South Dakota

Jacqueline Rippon

Arizona State University

Deidre Sechi

Iowa State University

Colleen Sincavage

Lesley University

Emily Whapham

Boston College

Sierra Williams

University Of Georgia

Morgan Zalewski

Central Michigan University

Nolan Zikas

Concordia University

Murphy Chambliss

Auburn University

Mateo Coka

Queens University

Jenna Collins

Coker College

Corson Hicks

Wingate University

Anna Kellner

University of North Carolina, Wilmington

Zephaniah Luck

University of North Carolina, Greensboro

Jake May

University Of Pittsburgh

Sarah McNeil

Wingate University

Lily Newton

NYU: Tisch School Of The Arts

Madison Pease

University Of South Carolina

Kenneth Poole

Coastal Carolina University

Megan Richards

Gardner Webb University

Bryan Willis

University of North Carolina, Chapel Hill

2016

Nickolas Main California Baptist University,
Mitchell Carbon, Whitworth University
Kenneth Poole, Coastal Carolina University

2015

Emily E. Whitworth, Texas Christian University
Patrick Nissan, UC Santa Barbara
Benjamin Seeley, Chapman University
Genesis Codina, UC Santa Barbara
Patrick O'Connor, University of Washington
Lily Newton, NYU: Tisch School of the Arts

2014

Bailey Quishenberry, University of California Riverside
Grant White, UC Irvine
Rachael Gottes, Duke
Kashannah Manawis, USD-University of San Diego
Kaylee Siegfried, Florida Atlantic University

2013

Drake Baker, CSU Northridge
Kendra Steinmetz, UCLA
Leticia Ayala, Art Institute of San Francisco
Arianna Grelling Whittier College
Alexandra Cunha, Cal State University San Marcos

2012

Andrew McMillan, Cal State University Fresno
Josh Weinstein, UC Berkeley

2011

Sarah Beth Comfort, University of Southern California
Mitchell Friesen, Azusa Pacific University
Terri Large, University of La Verne
Tessa Thym, Westmont College
Kristen Tuason, Mount Saint Mary's College

2010

Anna Maria Williams, Appalachian State University
Eden Siesser, Santa Monica College

Carissa Lane, Cal Poly San Luis Obispo
Bradley Davis, Loyola Marymount University

2009

Brooks Paul, UCLA
Allison Burgos, Azusa Pacific University
Christine Pechera, Pepperdine University
Andrew Sternlight, Yale Law School

2008

Blake Kenney, Cardinal Stritch University
Jeffrey Kosmo, Georgetown University
Tenisha (Avila) Burr, Fresno Pacific University
Roxanne Camanyag, UCLA
Tiffany Chhan, UC San Diego
Dylan Crane, Hiram College
Ryan Freydidg, Cal State University Long Beach
Eric Georges, Cal State University Chico
Courtney Jundt, Cal State University Monterey
Mark Kattus, UC San Diego
Isac Lee, Cornell
Kara McMichen, San Jose State University
Samuel Miller, CSU Bakersfield
Max Mueller, University of California Santa Cruz
Jenna Newburn, UC Santa Barbara
Arman Nobari, Cal State University Sacramento
Chelsea Sweeney, San Joaquin Valley College
Daniel Thompson, University of the Pacific
Victoria Valencia, Westminster College
Raeleen Whitt, Cal Baptist University
Brian Manning, Cal State Fullerton
Rachael Donaldson, Cal Baptist University

2007

Niles Cook, Pacific University
Ashley Eakin, San Diego State University
Brian Gingras, University of St. Augustine
Caleb Dominguez, Pepperdine University
Robert Buie, Cal Poly San Luis Obispo

2006

Travis Ricks, Cal State San Marcos
Guy Mansfield, Cal Lutheran University
Jason Edwards, UC Berkeley
Katie Freeman San Diego State San Diego CA
Megan Hickey University of San Diego La Mesa CA
Alison Richins, Cal Poly San Luis Obispo San Carlos CA

2005

Stefanie Sacknoff, University of San Diego
Michael Vanderby, University of San Diego
Kelly Purcell, University of the Pacific
Karina Rocker, CSU Northridge
Jonathan Chung, Cal State University San Marcos

2004

Brady Harrington, St. Johns University

2003

Victor Arvizo, DeVry Institute of Technology
Benjamin Boyle

2002

Lissa Corona, UC San Diego

2001

Alina Moeller, UC San Diego

2000

Agi Glowonia, UC San Diego

1999

Lana Lam UCLA

1998

Gary Anderson, UC Santa Barbara

1997

Jerry Cervantes Cal Poly Pomona

Directed Scholarships



2016 DEAR JACK SCHOLARS

awarded through Dear Jack Foundation to students pursuing a career in music

KALINA CAMPION

Dana Point, CA attending Cal State Fullerton
Kalina is a survivor of Hodgkin's Lymphoma. She plays multiple instruments in the band "Rocky's Revival" with her sister Kiana. The band released its latest LP "Newspaper Dream" in 2015 and performs regularly including opening for the Bangals and Justin Bieber.

AUSTIN GATUS

San Clemente, CA attending UCLA
Austin is an amazing musician and singer/songwriter. He plays multiple instruments including the saxophone and the guitar. He has opened for Kenny G and Dave Koz.

ALYSSA GARDNER

Chubbuck, ID attending Idaho State
Alyssa is a wonder classical musician and pianist.



Dear Jack Foundation Founder Andrew McMahon with scholarship recipient Kalina Campion (L) and her sister Kiana.

DEAR JACK
F♥UNDATION

The Dear Jack Foundation was founded by musician Andrew McMahon who is also a cancer survivor. Andrew supports Cancer for College's mission by supporting the scholarships of scholars pursuing a career in music and entertainment.

Directed Scholarships

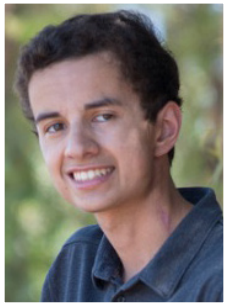


SKIP WOHL MEMORIAL SCHOLARSHIP

awarded by the Wohl Family

EVAN BAL attending Cal State University, San Marcos

TAYLOR HAY attending Los Angeles Valley College



CHERRY HAWK SCHOLARSHIP

awarded by the Cherry Hawk Foundation

ALAN CASEY attending University of California, Los Angeles

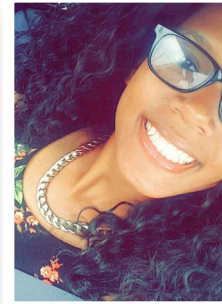


FOUNDER'S SCHOLARSHIP

awarded by founder Craig Pollard

ALEXIS JOHNSON

attending Massachusetts College of
Pharmacy and Health Sciences



ENTREPRENEURIAL SPIRIT SCHOLARSHIP

awarded through Leonard Family Gift to a cancer survivor that is pursuing a career in the field on entrepreneurial food service.

MATTHEW CAIRO

Escondido, CA, University of Nevada Las Vegas

Matthew is a survivor of acute lymphoblastic leukemia and a lover of food. He is studying hospitality and is also a published writer covering the food scene in Las Vegas.

JASMINE LOWE

Virginia Beach, Virginia, Johnson & Wales University

Jasmine is a survivor of Leukemia and is studying the baking and pastry arts. Her desire is to one day have her own shop and share her passion for baking with the world.

Event Recaps



Taste to Educate

The 9th annual event featured another amazing evening of wine and food to benefit Pacific Northwest survivors. The event was once again hosted by UW Medicine, Seattle Children's Hospital and the Seattle Cancer Care Alliance.



Best Coast Beer Festival

The 2nd annual Best Coast Beer Fest at Embarcadero Park in San Diego raised over \$16K for Cancer for College. The event attracted over 70 breweries and 4,000 guests. The event also featured a performance from Dear Jack scholar Kalina Campion and her band Rocky's Revival.



RED HOT BENEFIT - Will & Chad's Quinceanera

Will Ferrell, Chad Smith and the Red Hot Chili Peppers joined forces for an all-star evening of comedy and music to support Cancer for College and the Silverlake Conservatory of Music. The event featured an all-star drum off including Taylor Hawkins, Tommy Lee, Stewart Copeland, Mick Fleetwood and the USC marching band.



Miss Greek

The inaugural event saw 11 sororities from the University of Washington band together to create a fundraising drive that brought in over \$70K to the charity and culminated in an amazing talent show at the Neptune Theater.



Casino Night in the Carolinas

The 6th Annual Casino Night in the Carolinas raised over \$90K for cancer survivors from the Carolinas. The event awarded 16 new scholarships in 2016, the most in the history of the event.



The Classy Golf Classic

The 23rd Annual Classy Golf Classic and Un-Gala After Party bring together our longest running event and a celebration of all our scholarship recipients both old and new. The event raised over \$90K for the cause.



The Mentor Program

Building a deeper and longer lasting relationship with our scholars

The Cancer for College Mentor Program was born out of a desire to do more for our scholarship recipients than merely write them a check and wish them well in their pursuit of a college degree. It came from our founders desire and the drive of our most ardent supporters to play a greater role in the life of a cancer survivor. Thus, the mentor program was born.



The idea of the Cancer for College mentor program is to pair up a donor with a scholarship recipient who is pursuing a career in a field that matches up with the donor's area of expertise. Dear Jack Founder Andrew McMahon was one of the firsts to step up. We established the Dear Jack/Cancer for College scholarship that allowed Andrew to award scholarships to cancer survivors who wished to pursue music and/or the music industry as a career path. Andrew, who happens to be a world renown performer, shares his time and

experience with the recipients along with providing the financial support of a scholarship. He has even invited one of our scholarship recipients, Kalina Champion, and her band Rocky's Revival to open for him a pair of his shows.



Another mentor to lend his time and financial resources has been Steve Leonard. Steve is a successful entrepreneur who wanted to mentor a survivor that was looking to start a career in the food and or service industry. Over the past several years, he has been able to assist multiple survivors in their pursuit of a college education.

Cancer for College is looking for more individuals who want to serve the organization as a mentor. It's a wonderful way to make a difference in the life of a cancer survivor. It's an opportunity to help impact their life by sharing their own career and life experiences.

For more information on the Cancer for College mentor program please contact the office at 760-599-5096.

Our Stories

Meet the Cancer Survivors we are helping through our unique program



JOSE GUEVARA

LOS ANGELES, CA

ATTENDING:
CAL STATE LOS ANGELES
STUDYING:
POLITICAL SCIENCE
SURVIVOR OF:
ALL (LEUKEMIA)

Put your hands together for three-time scholarship recipient Jose Guevara!

Jose has spent the past six years battling A.L.L. three different times and was forced to withdraw from college twice. Through it all, Jose remained intensely focused on others, first and foremost his mother who stood by him and eventually became his bone marrow donor.

Jose learned the importance of giving back from his mother and volunteers at nearly every CFC event. With the help of Cancer for College, Jose experienced an internship with the prestigious O'Melveny law firm in Los Angeles and is now a senior year at Cal State Los Angeles and on his way to becoming a lawyer who advocates for cancer patient care.



KATHLEEN DOOLEY

CARLSBAD, CA

ATTENDING:
NORTE DAME
STUDYING:
ARCHITECTURAL PSYCHOLOGY
SURVIVOR OF:
BRAIN GLIOMA

Meet our friend Kathleen Dooley, a survivor of a brain glioma and senior Architectural Psychology major at Notre Dame!

Kathleen's tenacity for life is reflected and compounded by her humor in the face of cancer. Cracking jokes comes easily to her, and the possibility of losing her eyesight provided new material through which she could live it up. When doctors told her she would be unable to drive a car due to the cancer's effect on her vision, she adapted and began driving a golf cart around local neighborhood.

As gruesome as cancer and its treatment was for her, Kathleen opted to thrive in chaos by retaining her personality and determination to achieve her goal of becoming an architect.



ALAN CASEY

BRAWLEY, CA

ATTENDING:
UCLA
STUDYING:
POLITICAL SCIENCE
SURVIVOR OF:
BURKITT'S LYMPHOMA

Say "hi" to Alan Casey, He is the 2016 recipient of the Cherry Hawk scholarship. Beating cancer once is impressive, but Alan is a two-time cancer-fighting champion.

Battling Burkitt's lymphoma when he was eight and Mucoepidermoid Carcinoma just two years ago took a lot from Alan, even causing temporary paralysis of his face. Cancer taught him to be a more optimistic person, always ready to give back, and after he graduates from UCLA he wants to become a sports agent and give back to the community that gave him so much.

This year, Cancer for College helped him secure an internship with the United Talent Agency to help him pursue his career dreams.

FINANCIALS

Cancer for College is a 501 (c)3 non-profit charitable foundation that is supported through donations from individuals, foundations and businesses.

CANCER FOR COLLEGE - BALANCE SHEET

ASSETS

Current Assets	2016	2015	2014	2013	2012
Calif. Comm. Found. Endowed	3,248,646.35	2,539,220.85	1,954,019.04	-	-
Calif. Comm. Found. Non-Endowed	722,804.31	671,632.32	690,767.93	-	-
CFC Checking	451,419.44	333,616.53	95,918.61	161,310.89	103,259.40
CFC Savings	708,177.65	891,354.06	690,812.94	549,985.55	621,180.64
Wells Fargo CD	-	166,292.38	162,493.70	159,357.30	155,717.03
Northern Trust	-	-	-	1,331,027.71	607,268.38
Total Accounts Receivable	20,020.00	12,315.00	15,640.00	(24,363.50) ¹	365,464.00 ³
Total Other Current Assets	52,054.46	21,954.73	27,150.00	294,261.71 ²	444,817.63 ⁴
Total Assets	5,203,122.21	4,636,385.87	3,636,802.22	2,471,579.66	

LIABILITIES & EQUITY

Total Accounts Payable	25,000.00	0	14,840.00	0	0
Total Credit Cards	21,641.65	2,199.95	4,257.43	475.24	4,698.59
Total Other Current Liabilities	277.84	2,722.36	(4,482.06)	515.96	86.78
Total Liabilities	46,919.49	4,922.31	14,615.37	991.21	4,785.37
Unrestricted Net Assets	5,047,258.57				
TOTAL LIABILITIES & EQUITY	5,094,178.06	4,636,385.87			

Detail

¹- Return donation to Qualcomm due to inability to deliver video

²- Health Care Trust and Med Cap

³- Funds received from 7-Eleven on program invoiced in 2012

⁴- Health Care Trust and Med Cap

SOME OF OUR MOST AWESOME SUPPORTERS...

thankyou
from citi®

USC University of
Southern California



UNITED TALENT
AGENCY



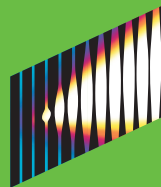
O'Melveny



DEAR JACK
FOUNDATION

UCLA Health

LEVEL FOUR
BUSINESS MANAGEMENT LLC



SONY
PICTURES



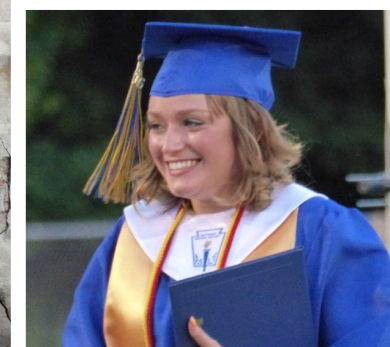
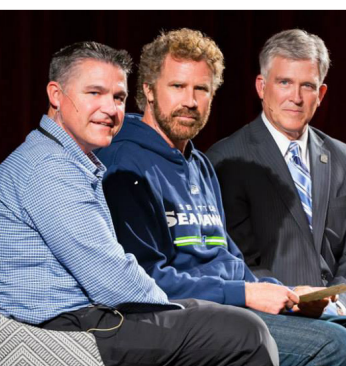
NEW LINE CINEMA



dw®

Ben & Jerry's Foundation • Entertainment Industry Foundation • 7-Eleven Foundation • RJ Hubbard Foundation
Katz Family Foundation • Pechanga Foundation • Muckleshoot Tribe • Tulalip Tribe • Puyallup Tribe
Bank of America /Merrill Lynch • Simon Family • Greenspan Family • Pollard Family • Dalton Family
Hughes Family • Kline Family • Hyzer Family • Leonard Family • Wohl Family • Cherry Hawk Stables

Become Part of our Team by calling 760.599.5096 or email info@cancerforcollege.org



**CANCER
FOR COLLEGE**

DONATE
www.cancerforcollege.org
760.599.5096



www.facebook.com/cancerforcollege

